



PYLA
PEARL

Where Joy becomes a lifestyle

DEVELOPED BY



ABOUT CYPRUS



- The 5th safest country in the world.
- Main tourist destination in Europe.
- Offers a high-quality lifestyle, year-round sunshine and stunning natural beauty.



*Images for illustration purposes only

LARNACA

Where opportunities await

- A promising city for real estate investments with an average annual appreciation growth of 5%.
- Future development projects are planned, such as: “New Larnaca Marina” and “Land of Tomorrow”.
- Main airport in Cyprus is located in Larnaca.
- A strategic location between cities in Cyprus.



PYLA PEARL

Where Joy becomes a lifestyle

- Gated compound in the Pyla area of Larnaca.
- Residential facility with 1, 2, & 3 bedrooms.
- Various amenities, such as: swimming pools, gardens, playgrounds, gym and managed by proper facility management.
- High levels of safety, privacy, and resident services.
- Only a four-minute drive to the beach.
- Energy-efficient project.
- Close to the British University of Central Lancashire, with easy city center access.



COMPOUND LOCATION



Locations and their distance from the project:

- Beach (4 min)
- Schools (4 min)
- The British University of Central Lancashire (4 min)
- Services (5 min)
(Restaurants, Pharmacies, Banks, Supermarkets)
- Parks (6 min)
- City Center (15 min)
- Airport (17 min)
- Ayia Napa (25 min)
- Nicosia (40 min)
- Limassol (50 min)



COMPOUND BUILDINGS



EXTERIOR AND INTERIOR



Modern and elegant buildings.



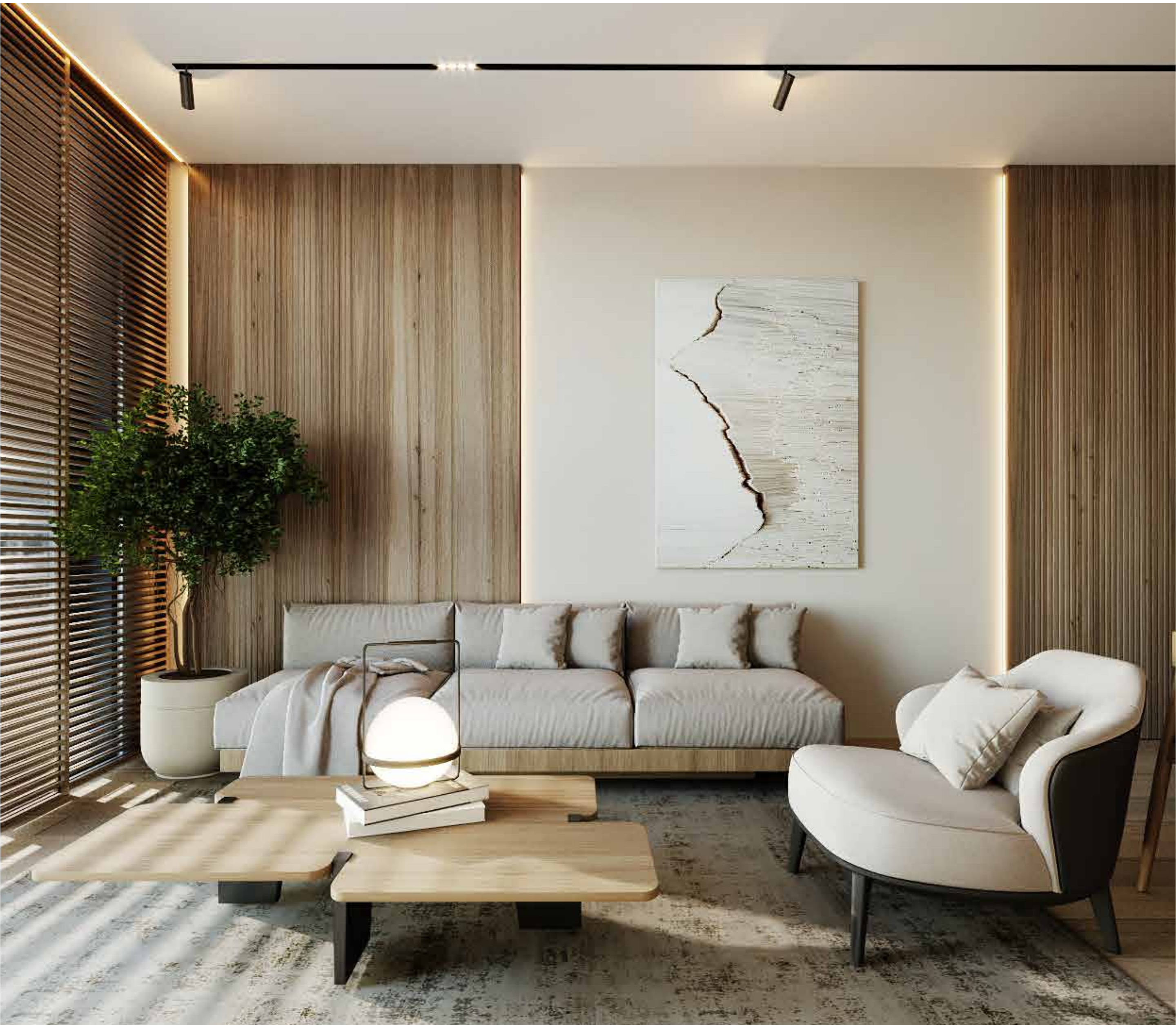
Interior Design

The apartments are not furnished, but this is the look and feel of it.



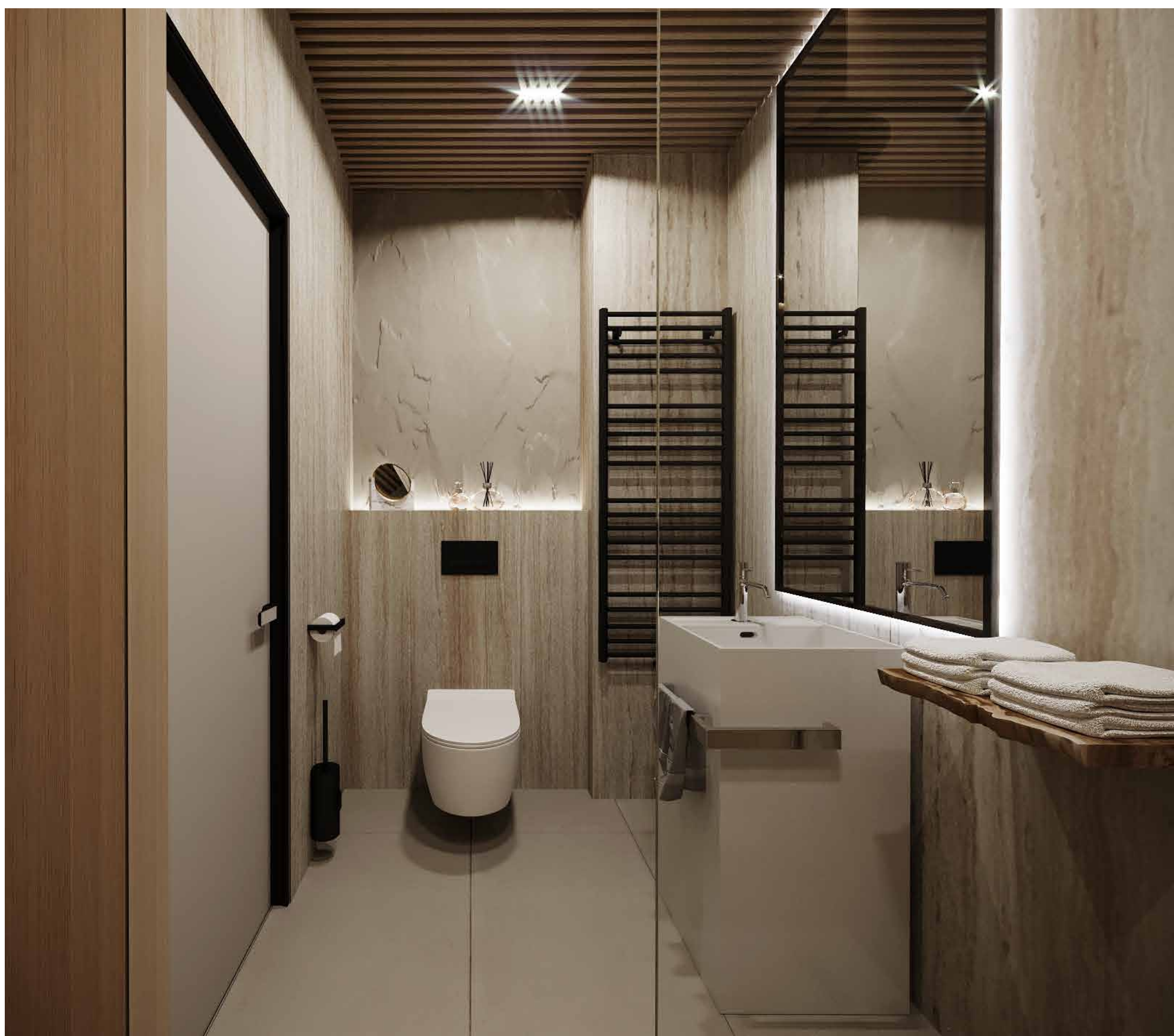
Sleek, contemporary
bedroom design.

Beautifully
designed
living area.

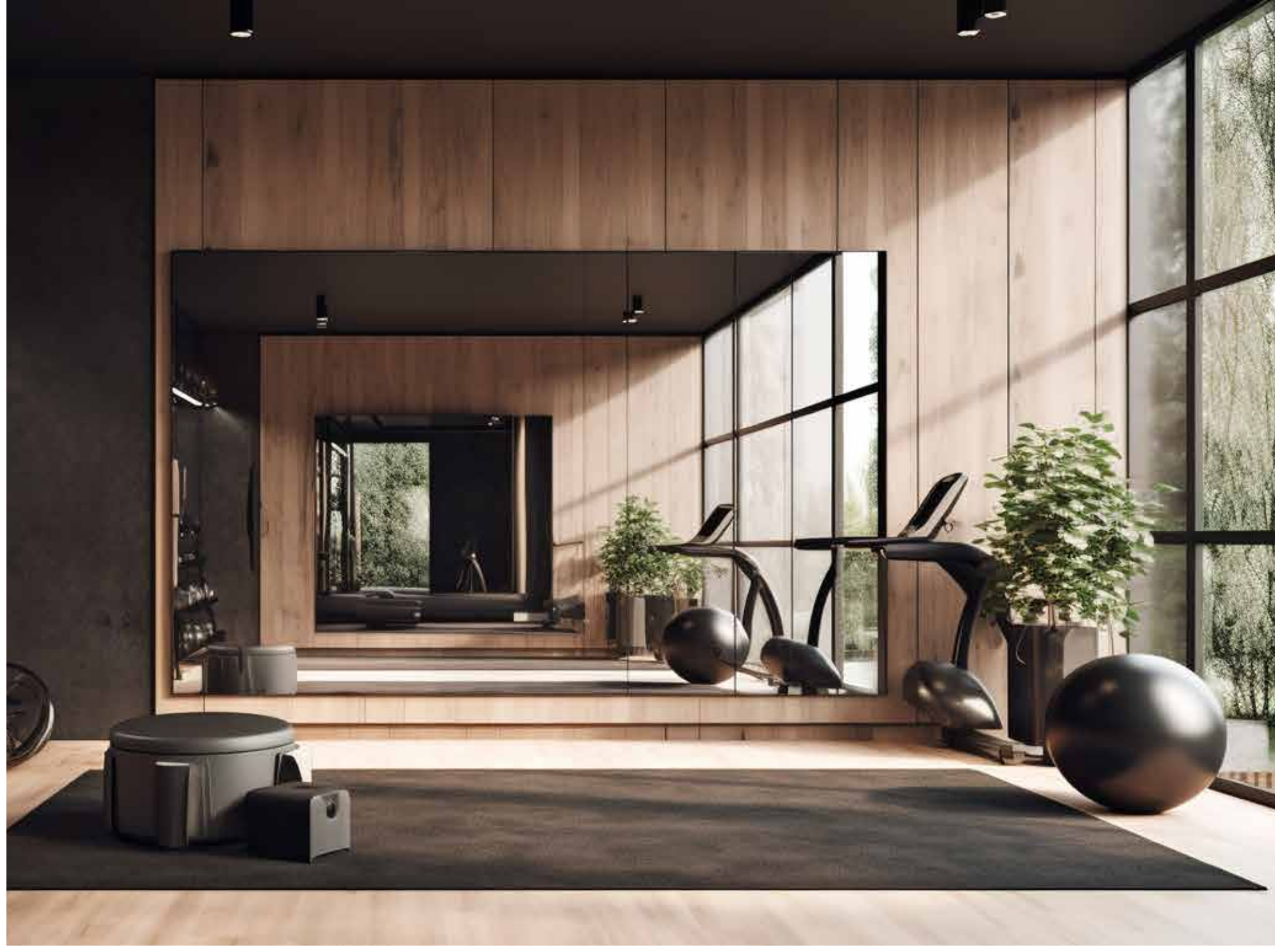




Stylishly
appointed
bathroom.



Fitness center with a refreshing garden view.





PROPERTY TYPES



1 BED ROOM



avg 66 sqm

TYPE 1



TYPE 2



2 BED ROOM



2

2

98 sqm
avg

TYPE 1



TYPE 2



*Images for illustration purposes only

3 BED ROOM



 3

 3

 129 sqm
avg

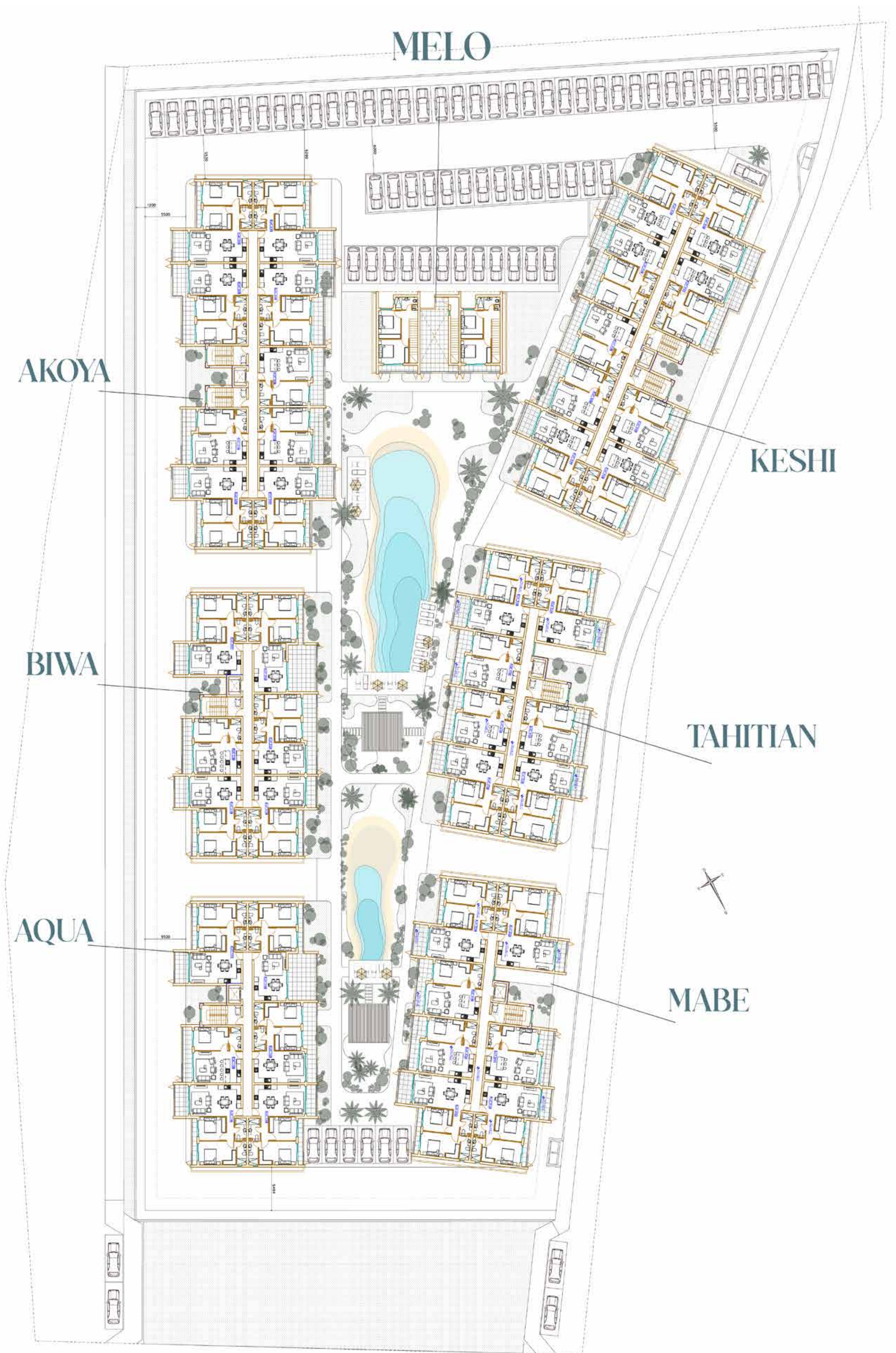
TYPE 1



TYPE 2



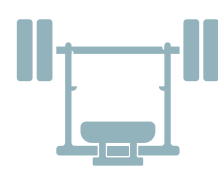
MASTER PLAN



COMPOUND FEATURES



Swimming Pools



Garden View
Gym



Tropical Garden
Views



Energy-efficient
project



Kid's Play Area



Balconies with
Premium Views



Dedicated
Parking Lots



*Images for illustration purposes only

EXPECTED

RETURN ON
INVESTMENT

5-9%

Apartments with
1,2 and 3 bedrooms



*Images for illustration purposes only



PYLA
PEARL

DEVELOPED BY



www.reachrealestate.com