



PYLA
PEARL

Where Joy becomes a lifestyle

DEVELOPED BY



ABOUT CYPRUS

- The 5th safest country in the world.
- Main tourist destination in Europe.
- Offers a high-quality lifestyle, year-round sunshine and stunning natural beauty.
- EU member - Potential Schengen Area.
- Attractive business destination.
- Real estate is booming - high increase in sales and building permits.



LARNACA

Where opportunities await

- It is undergoing major infrastructure development.
- A promising city for real estate investments with an average annual appreciation growth of 5%.
- Future development projects are planned, such as: “New Larnaca Marina” and “Land of Tomorrow”.
- Main airport in Cyprus is located in Larnaca.
- A strategic location between cities in Cyprus.
- Real estate in Larnaca has the highest price increase in Cyprus.



PYLA PEARL

Where Joy becomes a lifestyle

- Gated compound in the Pyla area of Larnaca.
- Residential facility with 1, 2, & 3 bedrooms.
- Various amenities, such as: swimming pools, gardens, playgrounds, gym and managed by proper facility management.
- High levels of safety, privacy, and resident services.
- Only a four-minute drive to the beach.
- Energy-efficient project.
- Close to the British University of Central Lancashire, with easy city center access.



COMPOUND LOCATION



Locations and their proximity from the project:

- Beach (4 min)
- Schools (4 min)
- The British University of Central Lancashire (4 min)
- Services (5 min)
(Restaurants, Pharmacies, Banks, Supermarkets)
- Parks (6 min)
- City Center (15 min)
- Airport (17 min)
- Ayia Napa (25 min)
- Nicosia (40 min)
- Limassol (50 min)



COMPOUND BUILDINGS



*Images for illustration purposes only

EXTERIOR AND INTERIOR



*Images for illustration purposes only

Modern and elegant buildings.



Interior Design

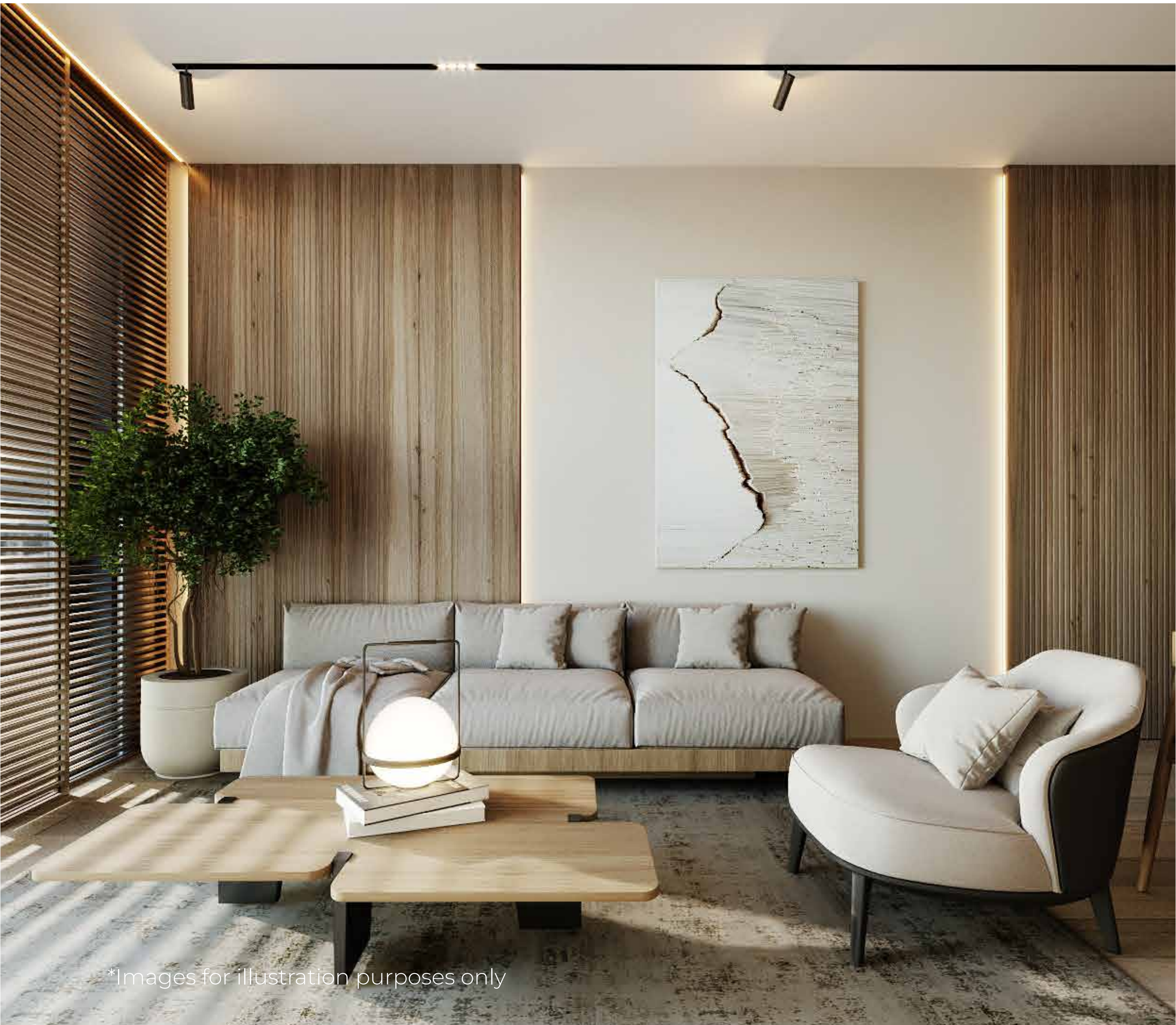
The apartments are not furnished, but this is the look and feel of it.



Sleek and contemporary
bedroom design.

*Images for illustration purposes only

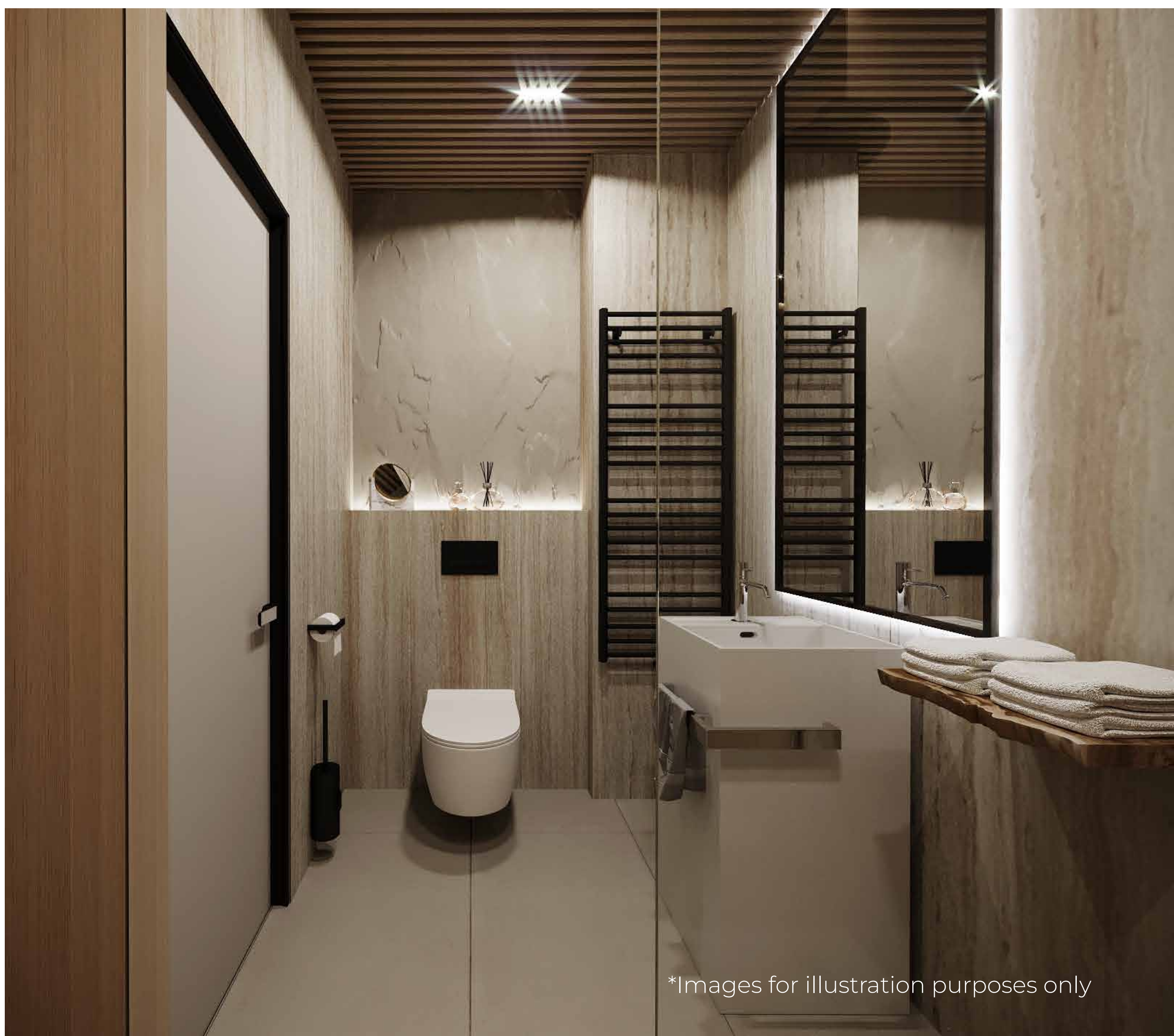
Beautifully
designed
living area.



*Images for illustration purposes only



Stylishly
appointed
bathroom.



*Images for illustration purposes only

Fitness center with a refreshing garden view.



*Images for illustration purposes only



PROPERTY TYPES



*Images for illustration purposes only

1 BED ROOM

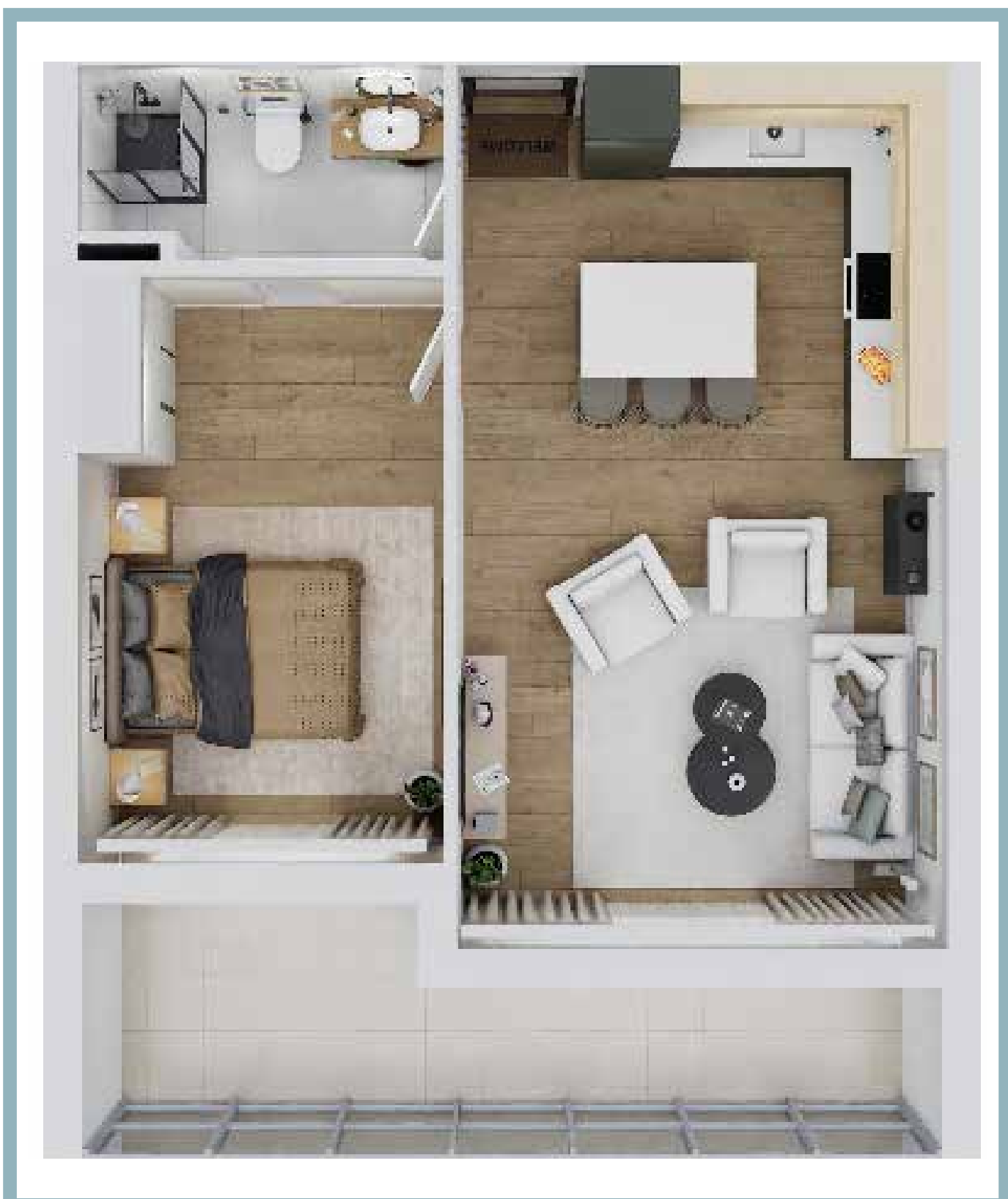


66 sqm

TYPE 1



TYPE 2



2 BED ROOM



2

2

98 sqm
avg

TYPE 1



TYPE 2

*Images for illustration purposes only

3 BED ROOM



 3

 3

 129 sqm
avg

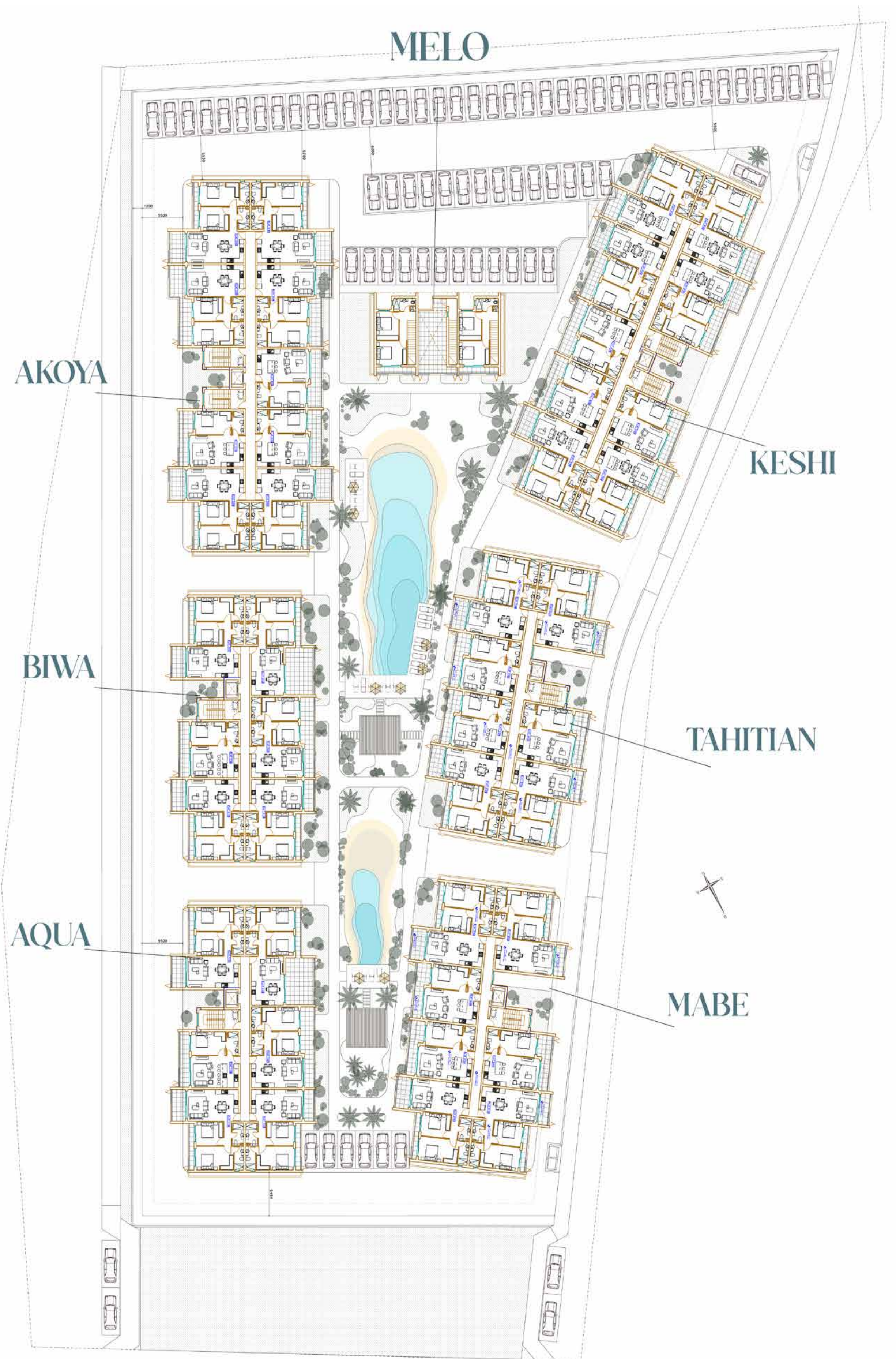
TYPE 1



TYPE 2



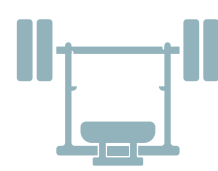
MASTER PLAN



COMPOUND FEATURES



Swimming Pools



Garden View
Gym



Tropical Garden
Views



Energy-efficient
project



Kid's Play Area



Balconies with
Premium Views



Dedicated
Parking Lots



*Images for illustration purposes only

EXPECTED

RETURN ON
INVESTMENT

5-9%

Apartments with
1,2 and 3 bedrooms



*Images for illustration purposes only



PYLA
PEARL

DEVELOPED BY



www.reachrealestate.com